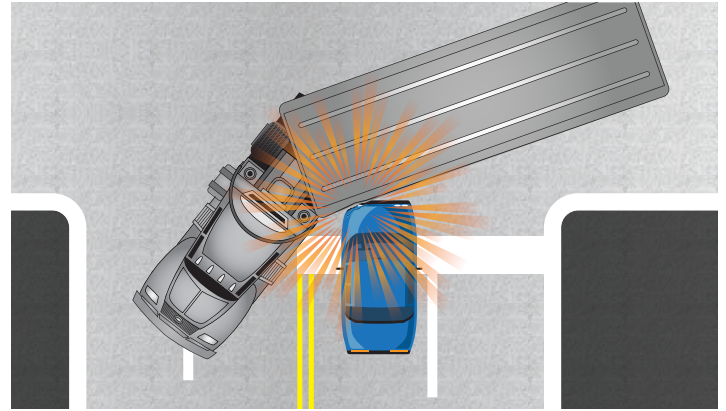
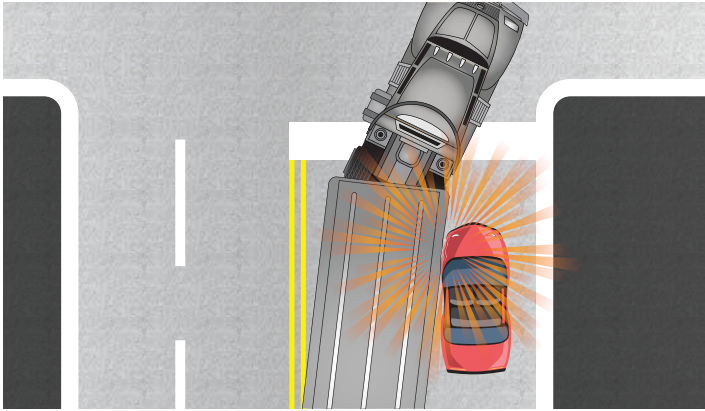




# TRUCKS MAKE WIDE TURNS

## Crowding a Semi Leads to Bad Results

A semi's height (up to 14'), length and weight make it nearly impossible for the driver to make tight turns like regular cars and trucks. A fully-loaded truck also has a much higher center of gravity than typical passenger vehicles and SUVs, making it easier for a truck to tip over. To avoid this situation, and to avoid driving over curbs and sidewalks, truck drivers usually move into adjacent lanes or swing wide prior to and after a turning maneuver.



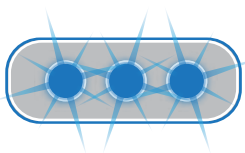
### Sneaking Alongside can be Fatal

Don't try to sneak to the side and squeeze around trucks—it may be the last mistake you'll ever make.

### Don't Crowd an Intersection

Many intersections are marked with stop lines, indicating where a driver must come to a complete stop. Crowding an intersection (stopping beyond the stop line or stop sign) leaves your vehicle exposed to semis and other vehicles attempting to turn.

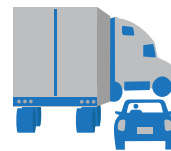
## TIPS TO STAY SAFE



**WATCH** the truck's turning signal to see what the driver intends to do.



**WAIT** for the truck to make its turn first as the truck's turn signal may not be working.



**DON'T CUT IN** along the right side of a truck.



**STAY BACK** at least a car length when stopped behind a truck.

For further information on how to drive Truck Smart visit the following sites or email [TruckSmart@utah.gov](mailto:TruckSmart@utah.gov):

